



Osmose

# O-Calc<sup>®</sup> Pro

Structural Analysis Software for Utility Poles

Eligible for  
IEEE  
PDH &  
CEU  
Credit

## O-Calc<sup>®</sup> Pro Training

Join Osmose **instructor Leann Newcomb** for a three-day O-Calc Pro Training with two days of general instruction and one day of specific topic training. Attendees can attend all three days or one of the two training seminars.

**June 29 - July 1, 2021 | 8 a.m. - 4 p.m. | San Diego, California**

LOCATION: **Holiday Inn San Diego Bayside** | 4875 N. Harbor Drive San Diego, CA 92106

**June 29 - 30: Two-Day O-Calc Pro Training**

COST: **\$850** early bird pricing includes lunch, snacks and beverages (**\$1,050** after May 28)

Gain a comprehensive understanding of O-Calc Pro functionality, including:

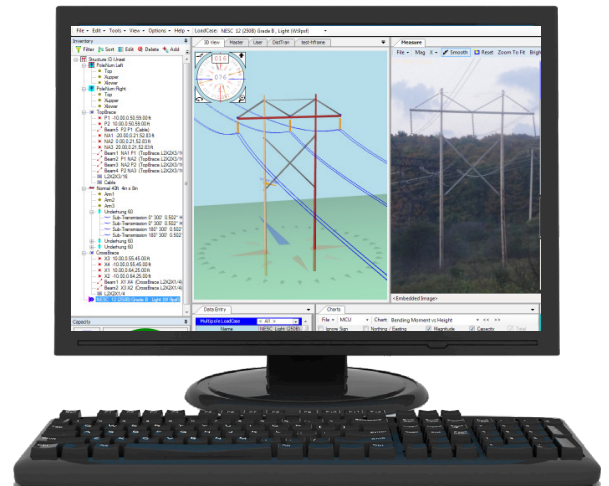
- Pole Loading 101, regulations, and basic navigation
- Default settings, layout, file storage, and catalogs
- Modeling poles, including span options, cross arm assemblies, and guy and anchor systems
- Using bundle editor and creating generic equipment
- Digital measurement technology (DMT) using photos
- Analysis of reports, charts, and wire tension types
- And much more!

**July 1: Line Design Training**

COST: **\$425** includes lunch, snacks and beverages  
(**\$525** after May 28)

Learn more about the O-Calc Pro Line Design features:

- Model and analyze a line of poles
- Perform global edits and additions to the line
- Design poles using Map backgrounds



To register, please contact Darlene Potter at **770-631-6995** or email [dpotter@osmose.com](mailto:dpotter@osmose.com).  
**LIMITED SPACE AVAILABLE! Call or email today to register.**