



O-Calc[®] Pro

Structural Analysis Software for Utility Poles

Eligible for
**IEEE
PDH &
CEU
Credit**

O-Calc[®] Pro Training

Join Osmose **instructor Leann Newcomb** for a three-day O-Calc Pro Training with two days of general instruction and one day of specific topic training. Attendees can attend all three days or one of the two training seminars.

October 12 - 14, 2021 | 8 a.m. - 4 p.m. | Peachtree City, Georgia

LOCATION: **Osmose Headquarters** | 635 Hwy 74 S, Peachtree City, GA 30269

October 12 - 13: Two-Day O-Calc Pro Training

COST: **\$950** early bird pricing includes lunch, snacks and beverages (**\$1,100** after September 12)

Gain a comprehensive understanding of O-Calc Pro functionality, including:

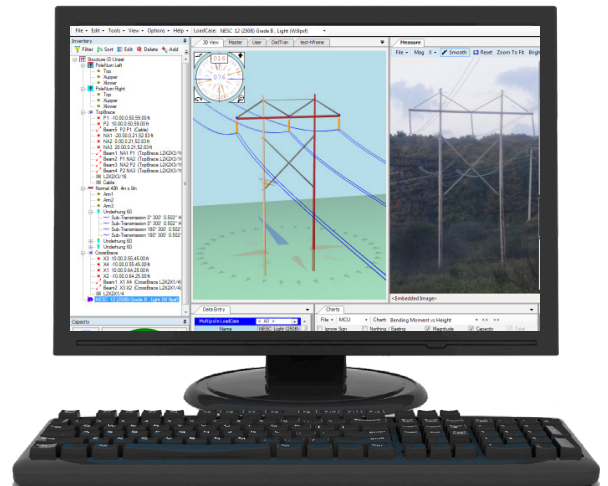
- Pole Loading 101, regulations, and basic navigation
- Default settings, layout, file storage, and catalogs
- Modeling poles, including span options, cross arm assemblies, and guy and anchor systems
- Using bundle editor and creating generic equipment
- Digital measurement technology (DMT) using photos
- Analysis of reports, charts, and wire tension types
- And much more!

October 14: Line Design Training

COST: **\$475** includes lunch, snacks and beverages
(**\$550** after September 12)

Learn more about the O-Calc Pro Line Design features:

- Model and analyze a line of poles
- Perform global edits and additions to the line
- Design poles using Map backgrounds



To register, please contact Darlene Potter at **770-631-6995** or email **dpotter@osmose.com**.
LIMITED SPACE AVAILABLE! Call or email today to register.