



O-Calc[®] Pro

Structural Analysis Software for Utility Poles

Eligible for
IEEE
PDH &
CEU
Credit

O-Calc[®] Pro Training

Join Osmose instructor **Mike Rigney, PhD** for a three-day O-Calc Pro Training with two days of general instruction and one day of specific topic training. Attendees can attend all three days or one of the two training seminars.

September 21 - 23, 2021 | 8 a.m. - 4 p.m. | Austin, Texas

LOCATION: **Holiday Inn Austin Airport** | 6711 East Ben White Blvd. Austin, TX 78741

September 21 - 22: Two-Day O-Calc Pro Training

COST: **\$950** early bird pricing includes lunch, snacks and beverages (**\$1,100** after August 21)

Gain a comprehensive understanding of O-Calc Pro functionality, including:

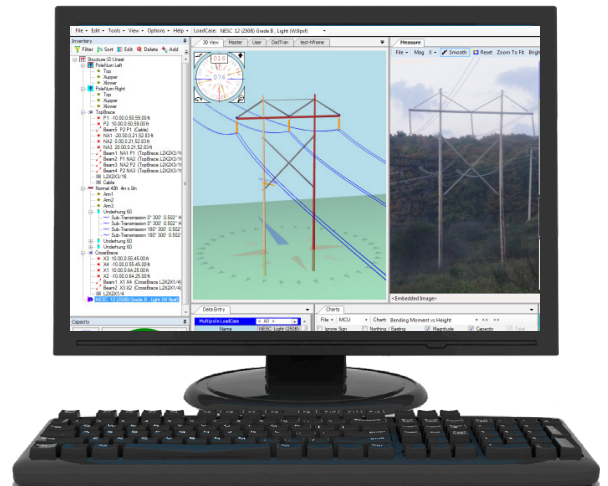
- Pole Loading 101, regulations, and basic navigation
- Default settings, layout, file storage, and catalogs
- Modeling poles, including span options, cross arm assemblies, and guy and anchor systems
- Using bundle editor and creating generic equipment
- Digital measurement technology (DMT) using photos
- Analysis of reports, charts, and wire tension types
- And much more!

September 23: Line Design Training

COST: **\$475** includes lunch, snacks and beverages (**\$550** after August 21)

Learn more about the O-Calc Pro Line Design features:

- Model and analyze a line of poles
- Perform global edits and additions to the line
- Design poles using Map backgrounds



To register, please contact Darlene Potter at **770-631-6995** or email dpotter@osmose.com.
LIMITED SPACE AVAILABLE! Call or email today to register.