



# O-Calc<sup>®</sup> Pro

Structural Analysis Software for Utility Poles

## O-Calc<sup>®</sup> Pro Training

Join Osmose **instructor Mike Rigney, PhD** for a three-day O-Calc Pro Training with two days of general instruction and one day of specific topic training. Attendees can attend all three days or one of the two training seminars.

**June 25 - 27, 2019 | 8 a.m. - 4 p.m. | Syracuse, New York**

LOCATION: **Osmose Corporate Office** | 200 Salina Meadows Parkway, Bldg 2 Suite 100, Syracuse, NY 13212

### June 25-26: Two-Day O-Calc Pro Training

COST: **\$850** includes lunch, snacks and beverages

Gain a comprehensive understanding of O-Calc Pro functionality, including:

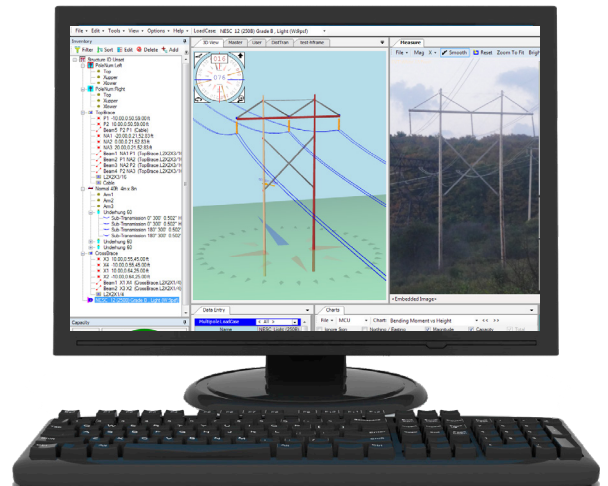
- Pole Loading 101, regulations, and basic navigation
- Default settings, layout, file storage, and catalogs
- Modeling poles, including span options, cross arm assemblies, and guy and anchor systems
- Using bundle editor and creating generic equipment
- Digital measurement technology (DMT) using photos
- Analysis of reports, charts, and wire tension types
- And much more!

### June 27: Line Design Training

COST: **\$425** includes lunch, snacks and beverages

Learn more about O-Calc Pro and the new Line Design features released this year.

- Model and analyze a line of poles
- Perform global edits and additions to the line
- Design poles using Map backgrounds



To register, please contact Darlene Potter at **770-631-6995** or email [dpotter@osmose.com](mailto:dpotter@osmose.com).  
**LIMITED SPACE AVAILABLE! Call or email today to register.**