



Osmose

O-Calc[®] Pro

Structural Analysis Software for Utility Poles

O-Calc[®] Pro Training

Join Osmose **Instructor Leann Newcomb** for a three-day O-Calc Pro Training with two days of general instruction and one day of specific topic training. Attendees can attend all three days or one of the two training seminars.

August 11 - 13, 2020 | 8 a.m. - 4 p.m. | Seattle, Washington

LOCATION: **Hampton Inn & Suites - Airport/28th Ave.** | 18850 28th Ave. S., SeaTac, WA 98188

August 11-12: Two-Day O-Calc Pro Training

COST: **\$850** early bird pricing includes lunch, snacks and beverages (**\$1,050** after July 11)

Gain a comprehensive understanding of O-Calc Pro functionality, including:

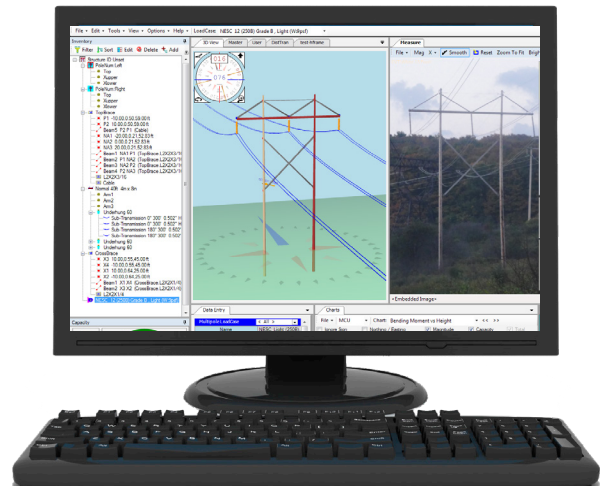
- Pole Loading 101, regulations, and basic navigation
- Default settings, layout, file storage, and catalogs
- Modeling poles, including span options, cross arm assemblies, and guy and anchor systems
- Using bundle editor and creating generic equipment
- Digital measurement technology (DMT) using photos
- Analysis of reports, charts, and wire tension types
- And much more!

August 13: Line Design Training

COST: **\$425** includes lunch, snacks and beverages (**\$525** after July 11)

Learn about the new O-Calc Pro Line Design Version functionality and features.

- Model and analyze a line of poles
- Perform global edits and additions to the line
- Design poles using Map backgrounds



To register, please contact Darlene Potter at **770-631-6995** or email dpotter@osmose.com.

LIMITED SPACE AVAILABLE! Call or email today to register.