



Osmose

O-Calc[®] Pro

Structural Analysis Software for Utility Poles



O-Calc Pro Training

Gain a comprehensive understanding of O-Calc Pro features, including multi-pole structures, digital measurement technology (DMT), O-Calc LE, and features from the recent O-Calc Pro V5.03 release.

January 9-10, 2019 | San Diego, California

Topic Areas

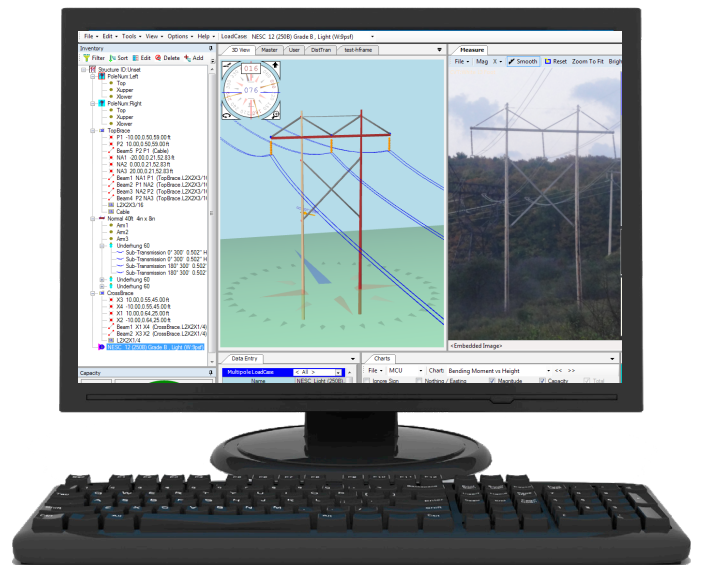
- Default settings, layout, file storage, catalogs
- Modeling poles, including span options, load cases cross arm assemblies, guys and anchors
- Using the bundle editor
- Tension and sag calculator
- Digital measurement technology (DMT)
- Viewing and interpreting reports
- And much more!

**LOCATION: Ramada San Diego North
Hotel & Conference Center**
5550 Kearny Mesa Road, San Deigo

TIME: 8:00 am - 4:00 pm each day

COST: \$495 includes lunch, snacks, and beverages

INSTRUCTOR: Leann Newcomb



To register, please call Darlene Potter at **770-631-6995** or email her at **dpotter@osmose.com**.

LIMITED SPACE AVAILABLE! Call or email today to register.