



Osmose

O-Calc[®] Pro

Structural Analysis Software for Utility Poles



O-Calc Pro Training

Gain a comprehensive understanding of O-Calc Pro features, including multi-pole structures, digital measurement technology (DMT), O-Calc LE, and features from the recent O-Calc Pro V5.03 release.

November 6-7, 2018 | Carlsbad, California

Topic Areas

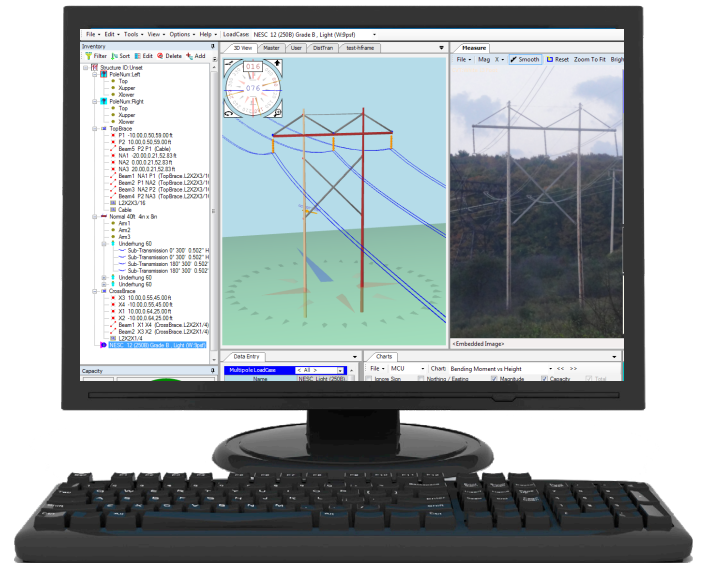
- Default settings, layout, file storage, catalogs
- Modeling poles, including span options, load cases cross arm assemblies, guys and anchors
- Using the bundle editor
- Tension and sag calculator
- Digital measurement technology (DMT)
- Viewing and interpreting reports
- And much more!

LOCATION: **Staybridge Suites**
2735 Palomar Airport Road, Carlsbad

TIME: **8:00 am - 4:00 pm** each day

COST: **\$495** includes lunch, snacks, and beverages

INSTRUCTOR: **Leann Newcomb**



To register, please call Darlene Potter at **770-631-6995** or email her at dpotter@osmose.com.

LIMITED SPACE AVAILABLE! Call or email today to register.